

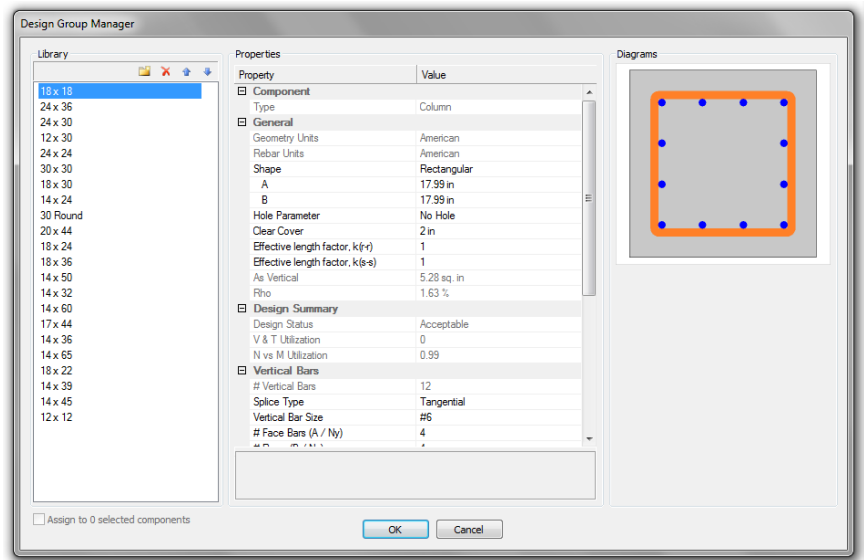
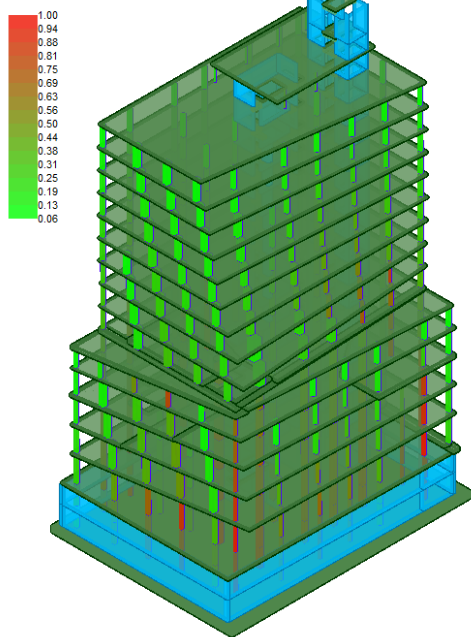


# ADAPT-Edge™ with Integrated Column Design

*Automated Design and Code Check of Columns using Tributary or Finite Element Loads*

Streamline your concrete building design process by using ADAPT-Edge 2015's integrated column design option. Load columns using ADAPT's patent-pending geometry-based tributary load takedown module, 3D Finite Element solution, or the envelope of both. Our column design module seamlessly runs in the background to deliver unparalleled automated design and code check options within the Builder environment. Detailed column section properties are defined as Design Groups, simplifying the management of columns in your large building models. As part of an integrated design workflow, columns in Edge can be designed for any combination of gravity or lateral loads. For projects with post-tensioned slabs, the hyperstatic effects of post-tensioning are automatically included in the column design loads. Live loads can be reduced using the results of the tributary area module. Column design results are presented in schedule format and exported as XLS tables.

Column, Individual Column Design Results, NvsM Utilization  
Maximum allowable 1.00



Design Group Manager used to define section properties

## Key Features:

- Select tributary, 3D FEM or Envelope loads
- Includes hyperstatic effects of post-tensioning
- Accounts for slab/column frame action
- Option to integrate gravity and lateral loads
- Manage columns using Design Groups
- Define longitudinal and shear reinforcing configurations
- Automated design
- Automated code check
- Detailed code check report
- XLS-based column schedule
- Live load reduction
- Slenderness effects using k values
- Design and code check options for columns
- Color coding of design results in model
- Column loads and capacity shown graphically
- Option to open column individually to review
- Supported codes for column design:
  - ACI 1999 / 2002 / 2005 / 2008 / 2011
  - BS8110 1985 / 1997
  - CP65 1999
  - CSA 1994 / 2004
  - EC2 2004/DFLT 2004/UK
  - UBC 1997
- Requires license purchase for column module

**ADAPT Corporation**  
Redwood City, CA, USA

**ADAPT International**  
Kolkata, India

**ADAPT Latin America**  
Miami, FL, USA

**ADAPT Europe**  
Perugia, Italy