

Automatically Generated Rebar

05/11/05  
 13:59:24

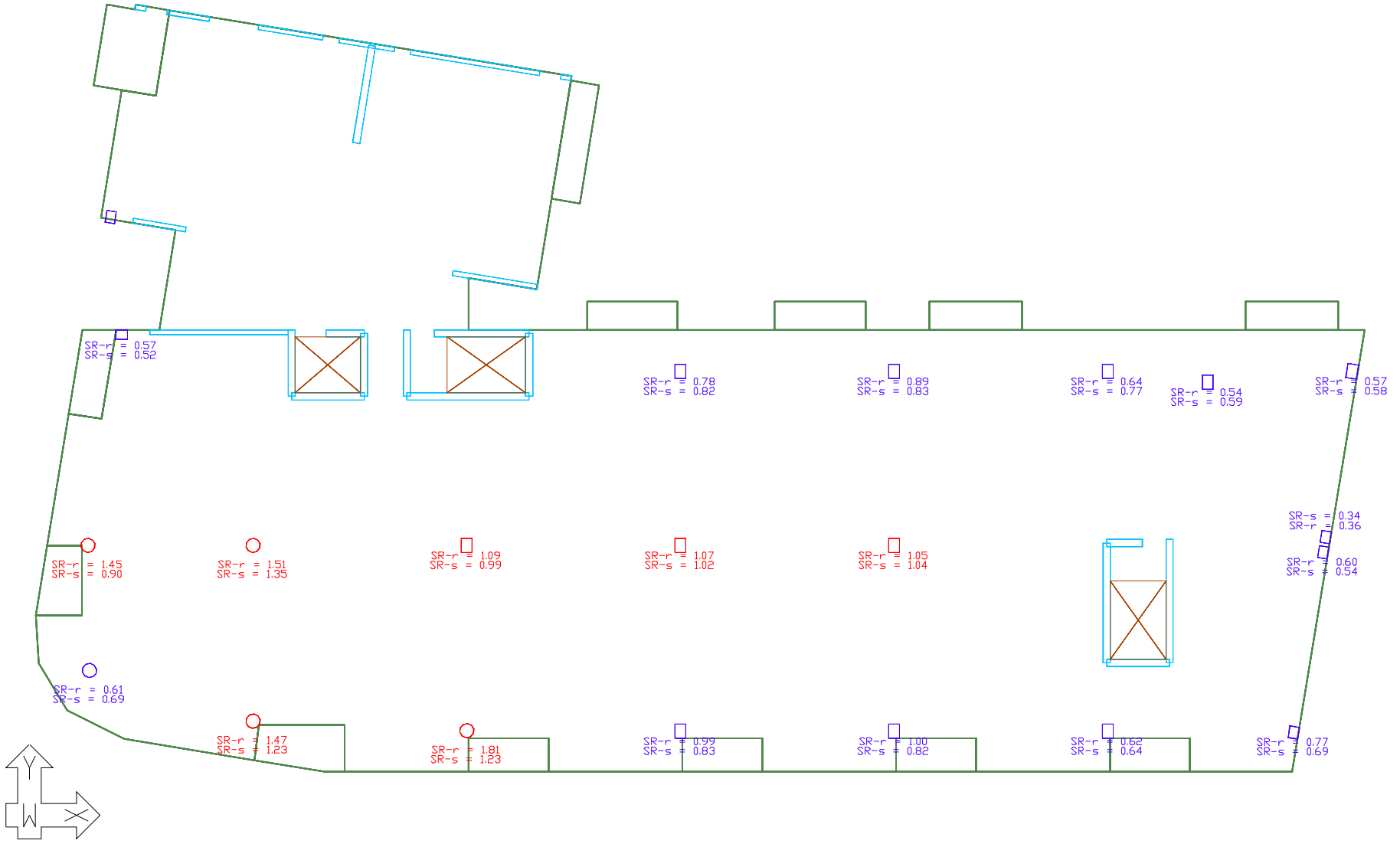
TypicalFloor\_020505\_AC199.adm

Typical Floor

ADAPT

CBM

Graphical Output from ADAPT-Floor Pro



ADAPT Corporation Copyright © 2005 all rights reserved

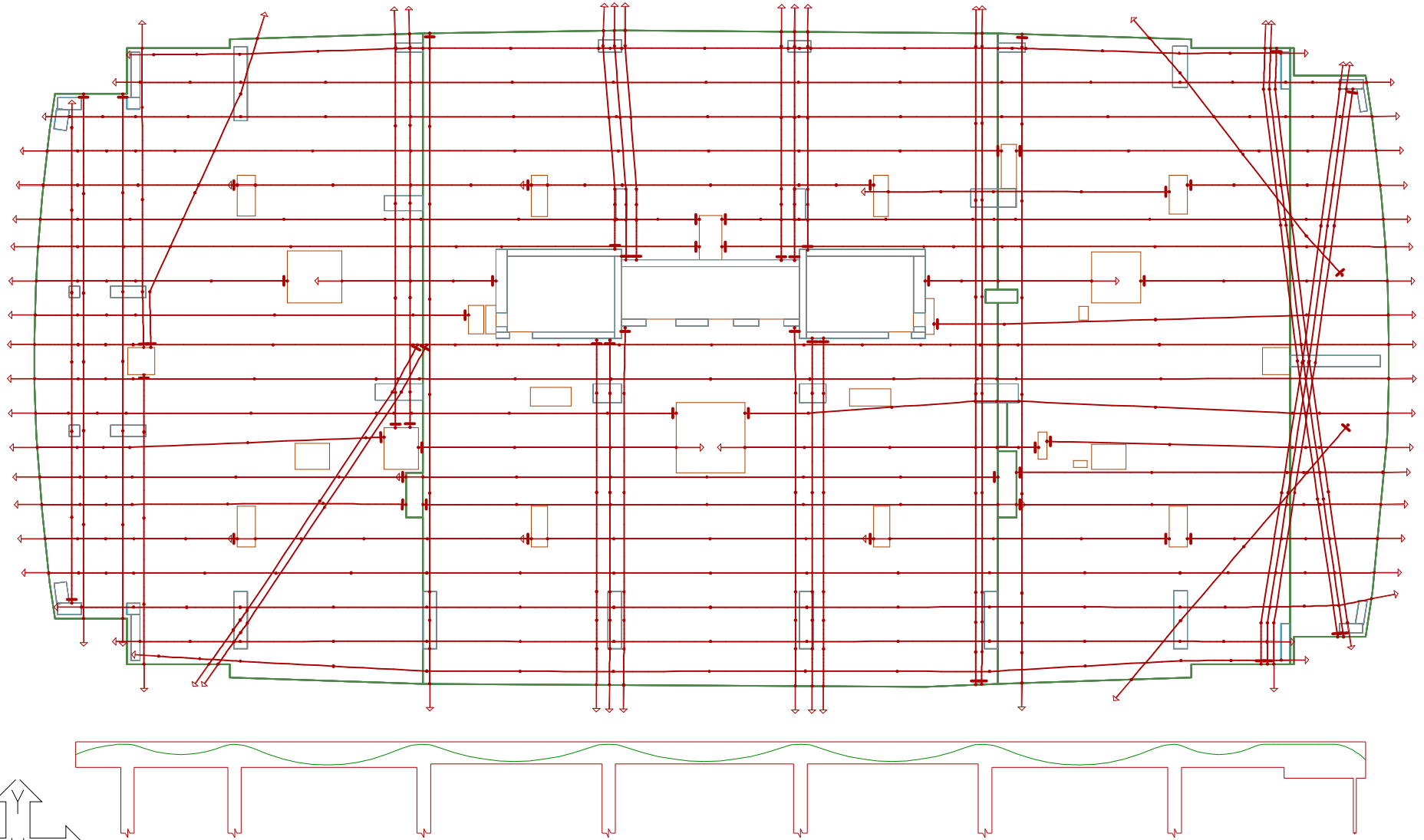
Punching Shear Check

05/10/05  
15:00:13  
TypicalFloor\_020505\_AC199.adm

Typical Floor

ADAPT  
CBM

Graphical Output from ADAPT-Floor Pro



ADAPT Corporation Copyright © 2005 all rights reserved

Tendon Plan

05/10/05

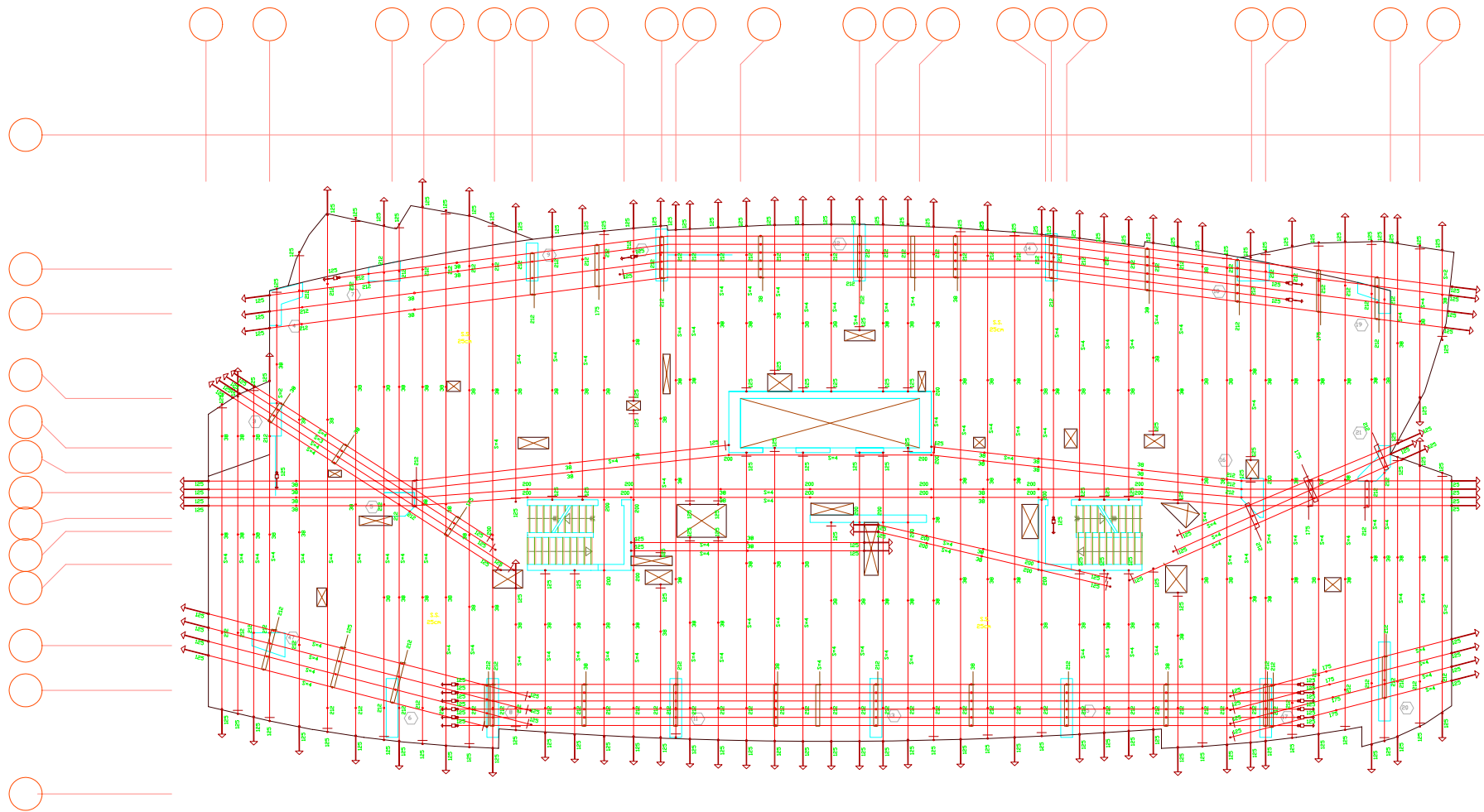
13:58:52

Typ\_050205.adm

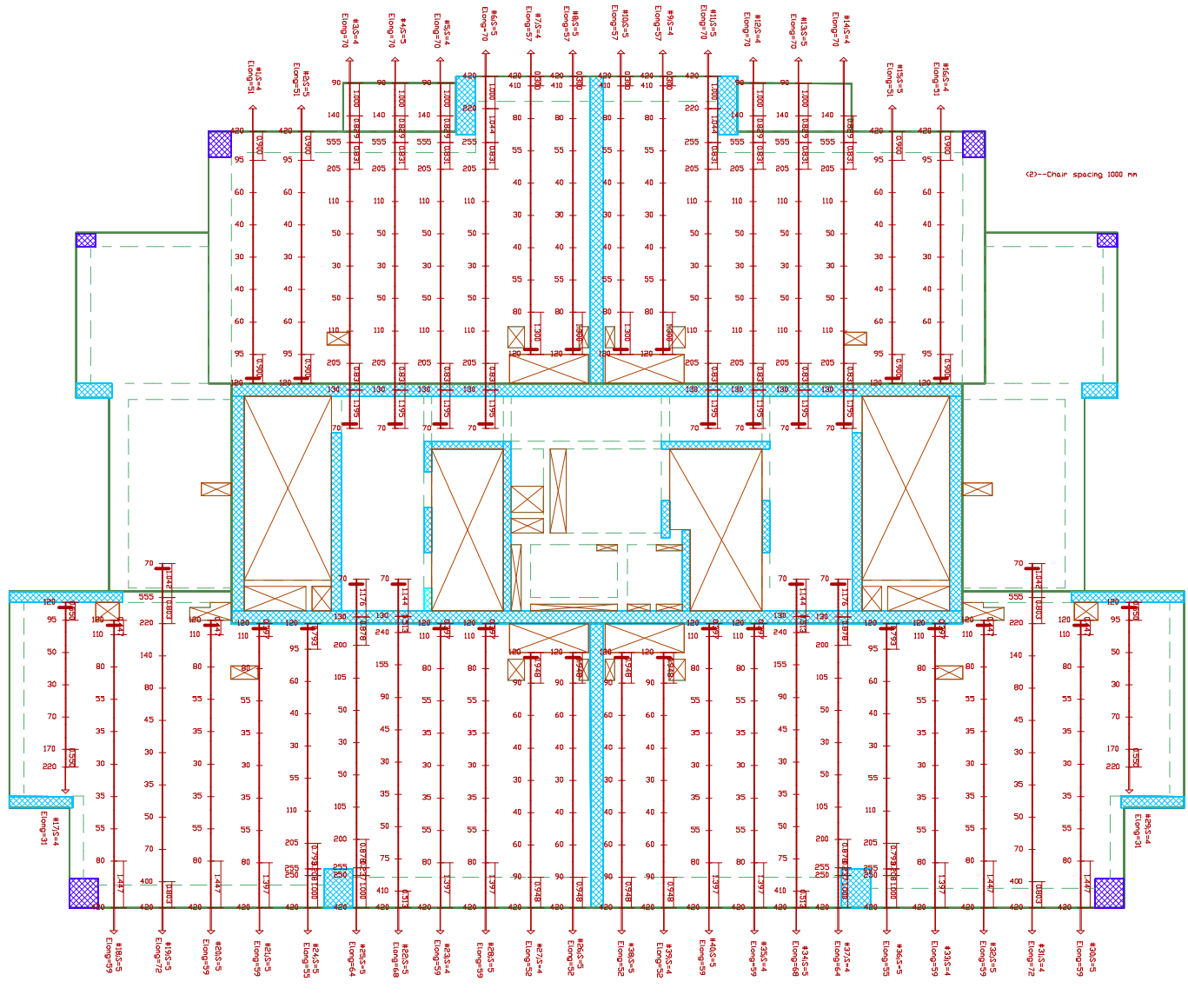
**BBC Bank**  
**Typical Floor**

ADAPT

CBM



# Graphical Output from ADAPT-Floor Pro



ADAPT Corporation Copyright © 2005 all rights reserved

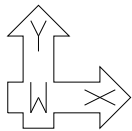
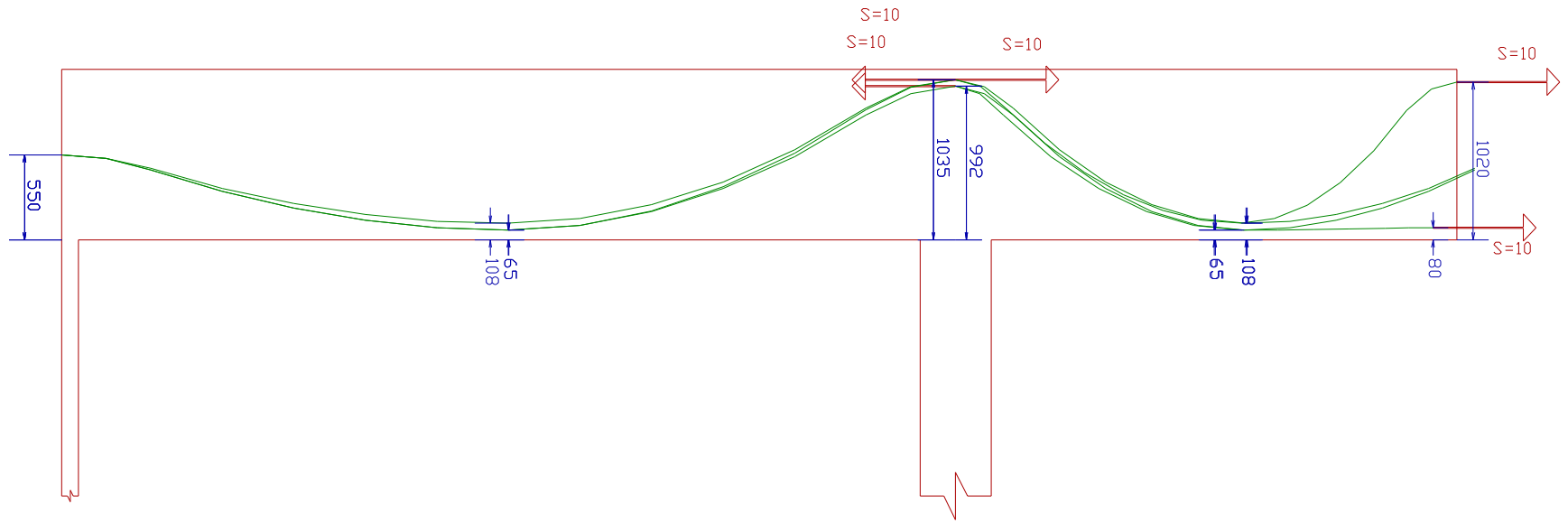
## Tendon Plan

# SAMPLE SHOP DRAWING

## Typical Floor

05/06/05  
17:46:14  
UAE tower.adm

ADAPT  
CBM



ADAPT Corporation Copyright © 2005 all rights reserved

### Beam Elevation

05/10/05  
12:02:02

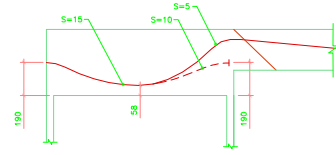
WM\_1st\_pt1\_040305\_mesh.adm

# AI-Wahda Mall Part 1 - 1st Floor

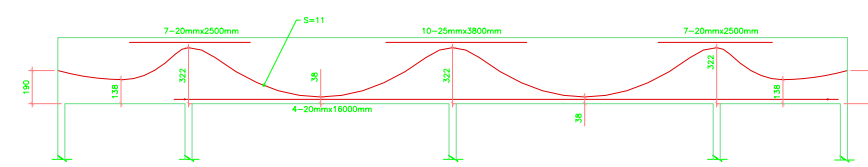
ADAPT

CBM

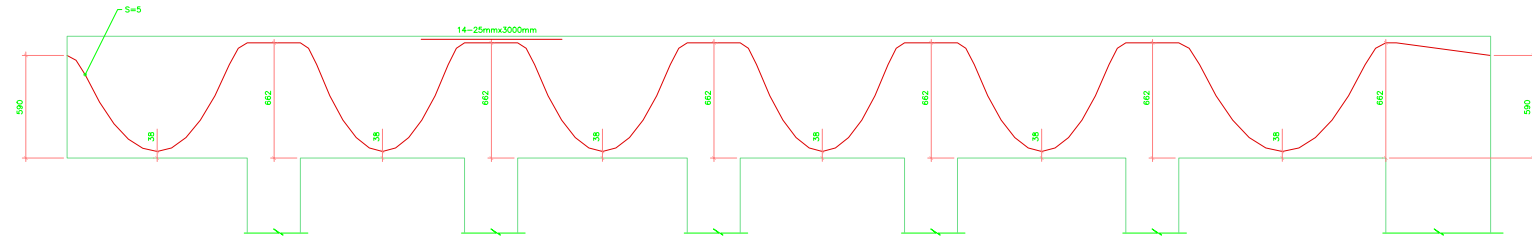
# Graphical Output from ADAPT-Floor Pro



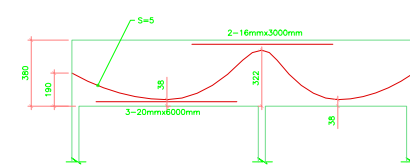
HCB9



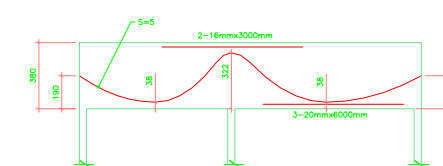
HCB1



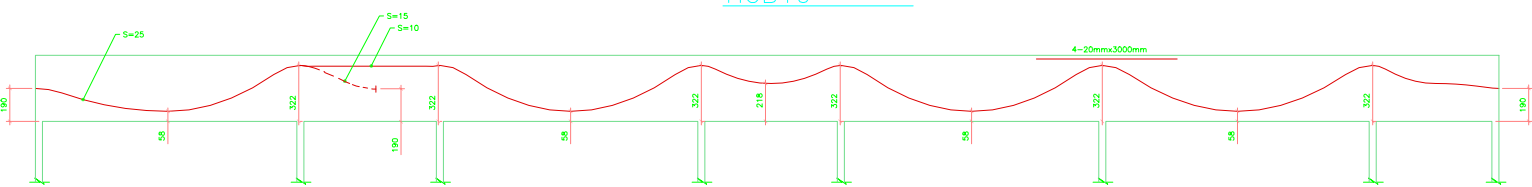
HCB10



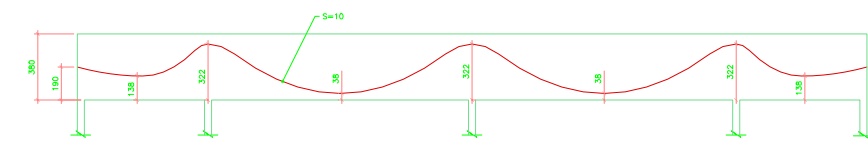
HCB2



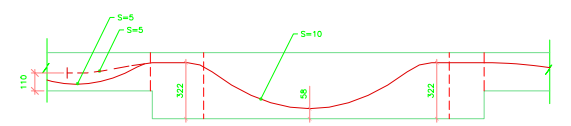
HCB3



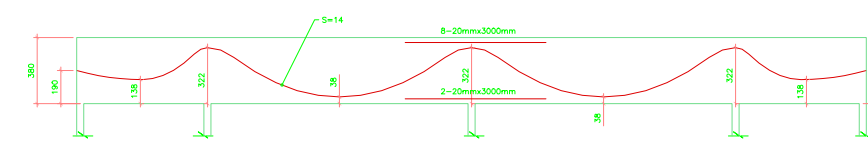
HCB11



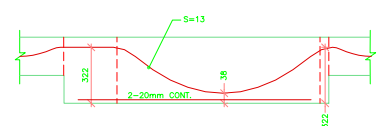
HCB4



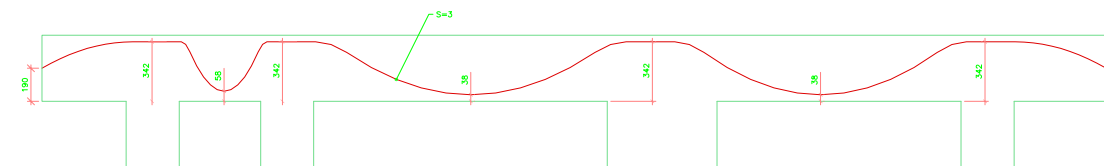
HCB12



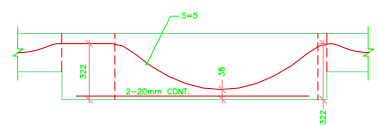
HCB5



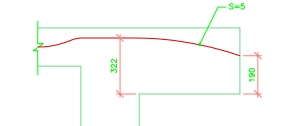
HCB14



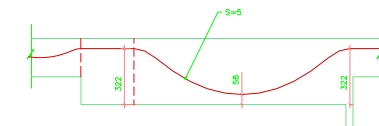
HCB6



HCB14A



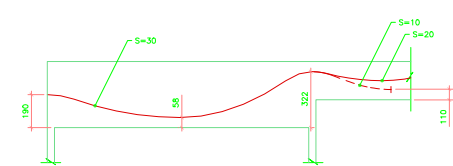
HCB15



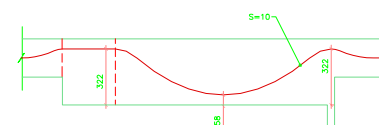
HCB13/HCB13A

HCB SCHEDULE	
MARK	SIZE
HCB1	1400 x 380
HCB2	1400 x 380
HCB3	1400 x 380
HCB4	1400 x 380
HCB5	1400 x 380
HCB6	980 x 380
HCB7/7A	1020 x 380
HCB8	610 x 380
HCB9	1020 x 380
HCB10*	200 x 700
HCB11	1520 x 380
HCB12	1020 x 380
HCB13/13B/13C	610 x 380
HCB13A	610 x 380 230 x 380*
HCB14/14A	1730 x 380
HCB15	1000 x 380
HCB16	1520 x 380

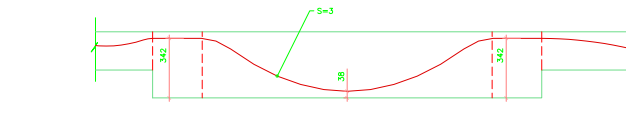
\* SEE SECTION B1 FOR REINFORCEMENT



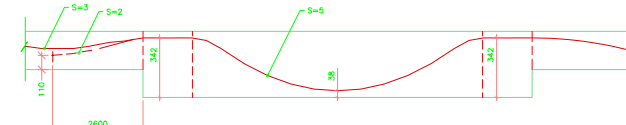
HCB16



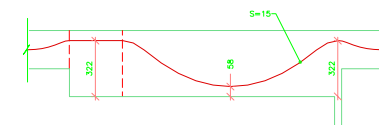
HCB13B



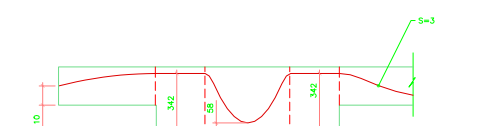
HCB7



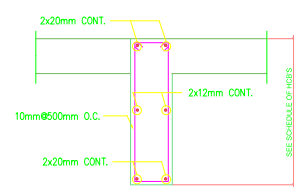
HCB7A



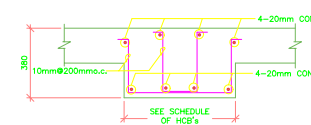
HCB13C



HCB8

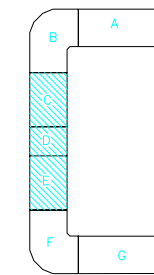


SECTION B1  
NOT TO SCALE



TYPICAL BEAM REINFORCING

NOTE :  
"FOR PLAN CHECK"



NO.	DATE	REVISED	APPROVED
01			
02			
03			
04			
05			
06			
07			

PROJECT: BUILDING (G + 6 TYP. + H.C.)

CLIENT:

TITLE: H.C. FLOOR BLOCK-C,D & E BEAMS

P/T DESIGNER: ADAPT Corporation  
Adapt Structural Engineering Consultants  
1733 Woodside Road, Suite 220 Redwood City, California 94061, USA  
Tel: (650) 306-2400 Fax: (650) 364-4678 E-mail: info@adaptsoft.com

P/T MAIN CONTRACTOR:

ARCHITECT:

STRUCTURE ENG.:

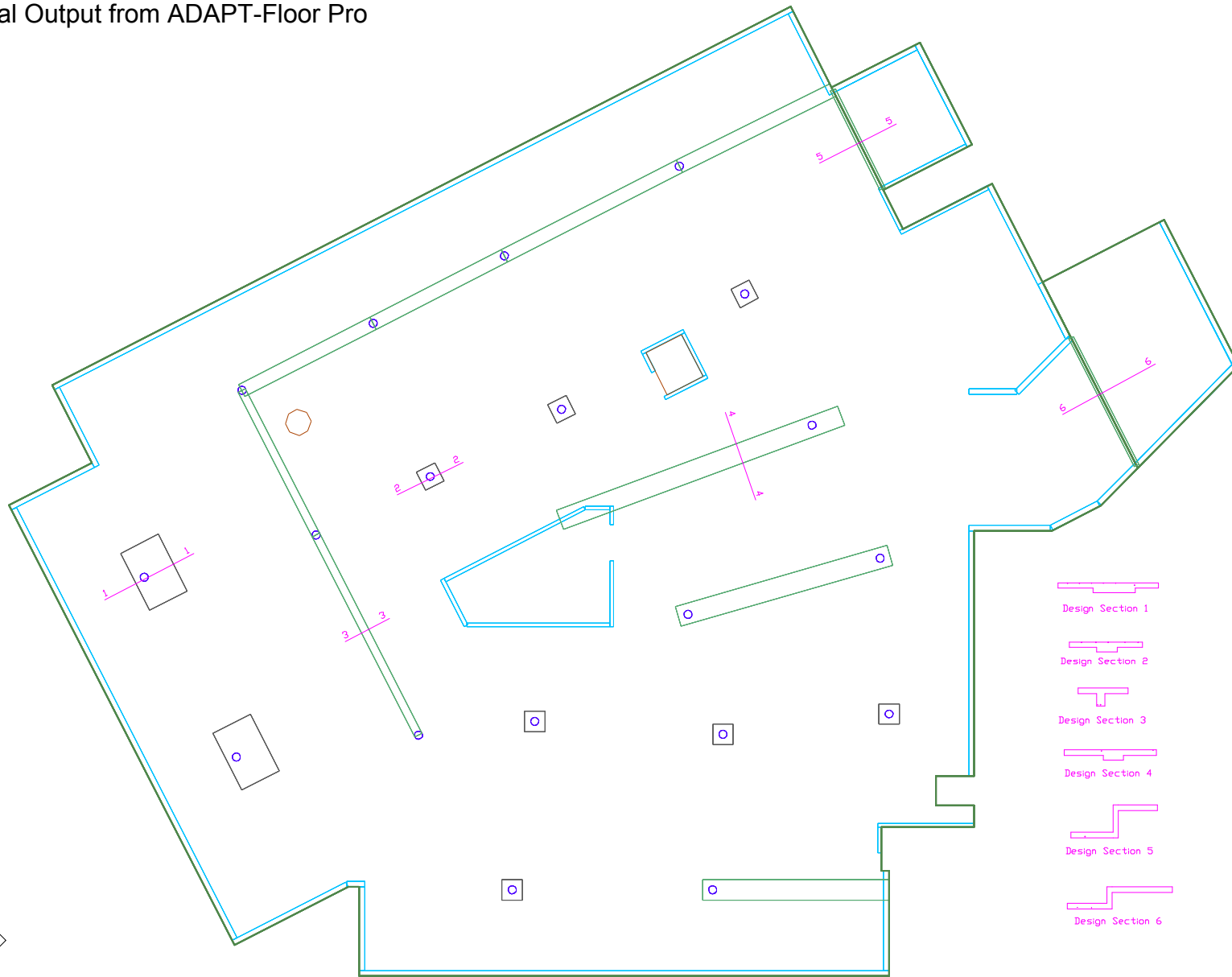
ELECTRICAL ENG.:

MECH. ENG.:

CAD BY: ADAPT

SCALE: NOT TO SCALE DATE: JUNE/2001

PROJECT NO.: P41688 00 SR PL FR - 01 SP#3 00



ADAPT Corporation Copyright © 2005 all rights reserved

Concrete Outline

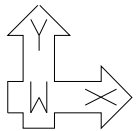
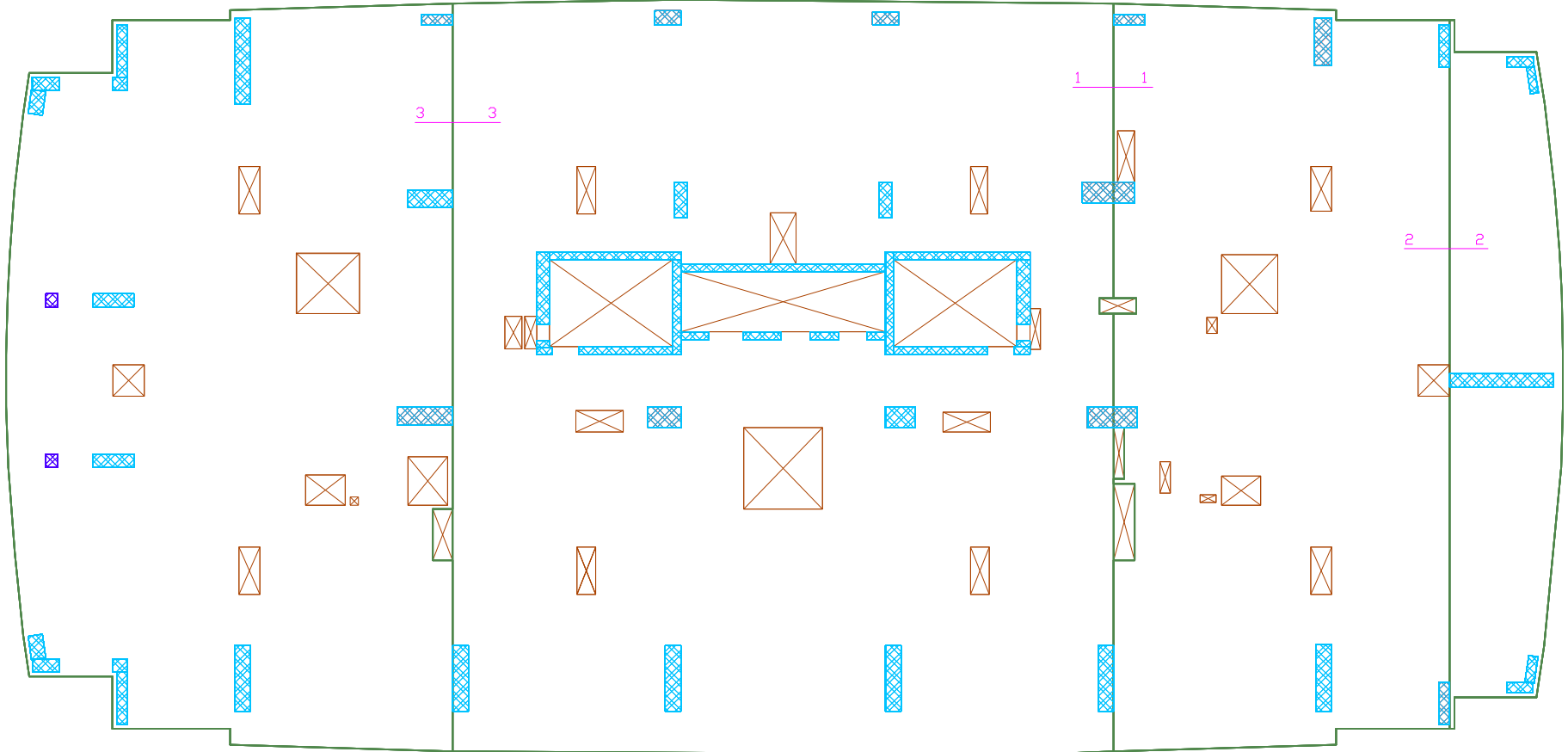
05/10/05  
15:51:23

HIE\_032603.adm

Express  
1st Floor

CBM





ADAPT Corporation Copyright © 2005 all rights reserved

Concrete Outline

# Bank Typical Floor

05/10/05  
13:42:39

Typ\_050205.adm

ADAPT

CBM